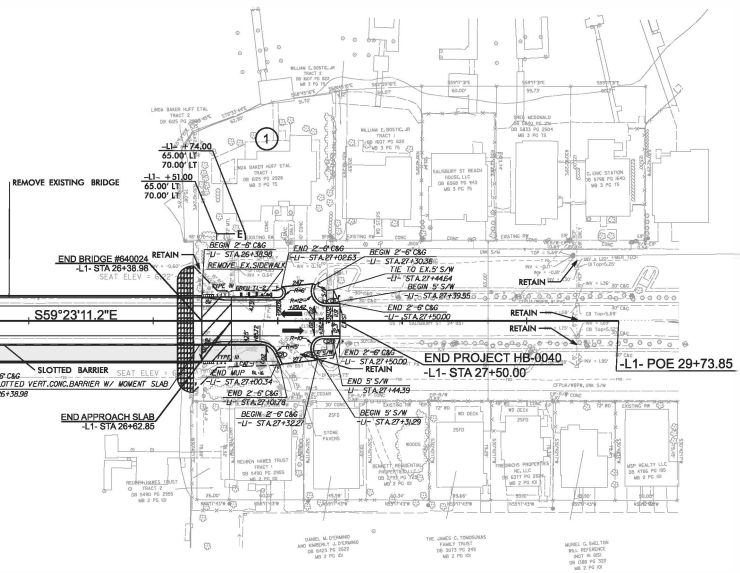


Preliminary Plans - Subject to Change Without Notice

FOR -L1- AND -Y1- PROFILES, SEE SHEET NO. 8

MATCH LINE -L1- STA 24+00.00 SEE SHEET 4



PARCEL OWNERS
1 - LINDA BAKER HUFF ETAL



Preliminary Plans - Subject to Change Without Notice

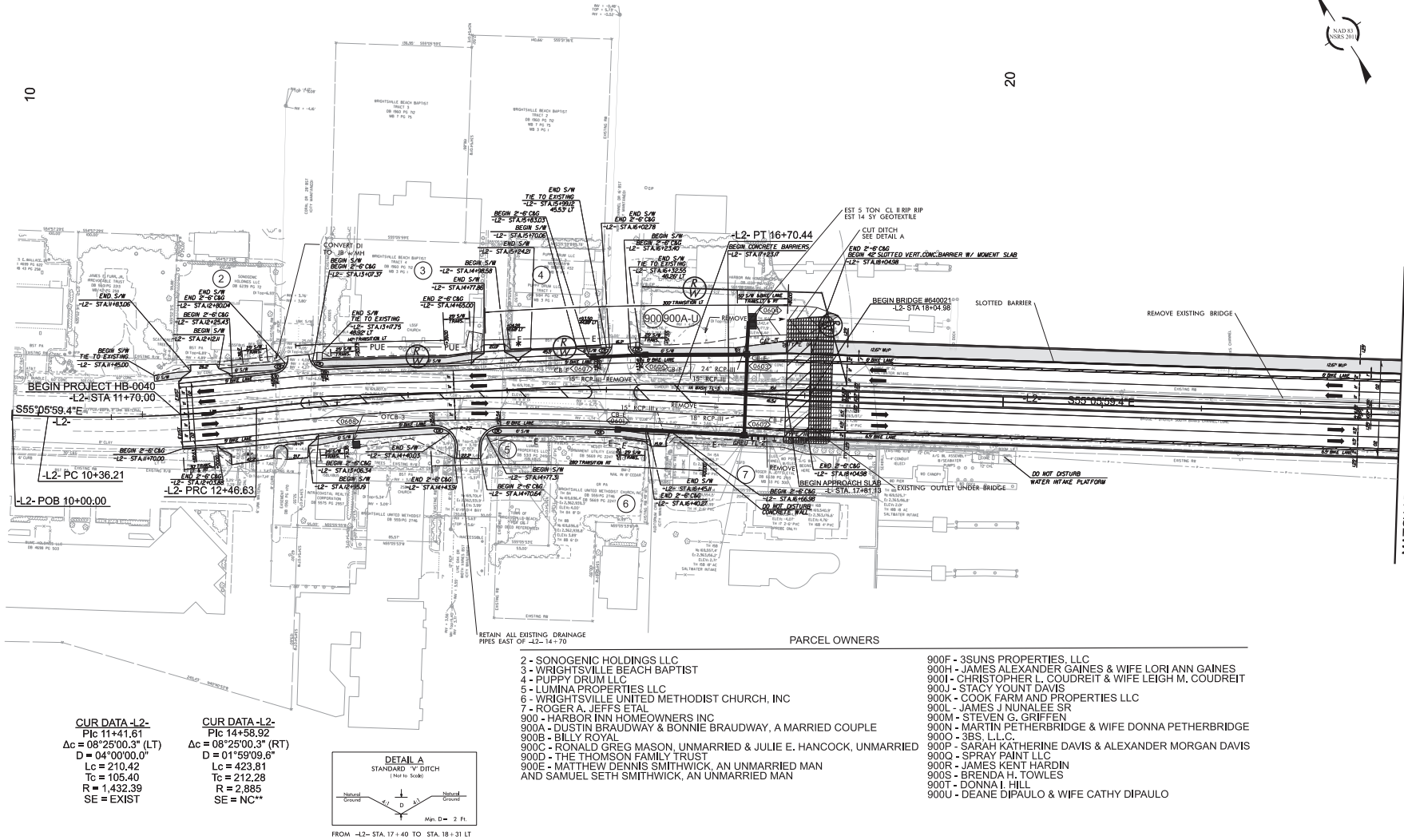
FOR -L1- PROFILE, SEE SHEET NO. 8

HB-0040
5
NORTH CAROLINA DEPARTMENT OF TRANSPORTATION NEW HANOVER COUNTY
ROADWAY DESIGN UNIT ROADWAY DESIGN ENGINEER
INFORMATION ENGINEER
DOCUMENT NOT CONSIDERED FINAL UNLESS ALL NOTATIONS COMPLETED PREPARED BY RS&H RICK S. RICHARDS, P.E. 11/14/23

REVISIONS

10

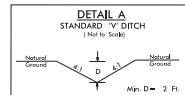
20



MATCH LINE -L2- STA 24+00.00 SEE SHEET 7

CUR DATA -L2-
Pc 11+41.61
 $\Delta c = 08^{\circ}25'00.3''$ (LT)
D = 04'00'00.0"
Lc = 210.42
Tc = 105.40
R = 1,432.39
SE = EXIST

CUR DATA -L2-
Pc 14+58.92
 $\Delta c = 08^{\circ}25'00.3''$ (RT)
D = 01'59'09.6"
Lc = 423.81
Tc = 212.28
R = 2,885
SE = NC**



FROM -L2- STA. 17+40 TO STA. 18+31 FT

2 - SONOGENIC HOLDINGS LLC
3 - WRIGHTSVILLE BEACH BAPTIST
4 - PUPPY DRUM LLC
5 - LUMINA PROPERTIES LLC
6 - WRIGHTSVILLE UNITED METHODIST CHURCH, INC
7 - ROGER A. JEFFS ETAL
900 - HARBOR INN HOMEOWNERS INC
900A - DUSTIN BRAUDWAY & BONNIE BRAUDWAY, A MARRIED COUPLE
900B - BILLY ROYAL
900C - RONALD GREG MASON, UNMARRIED & JULIE E. HANCOCK, UNMARRIED
900D - THE THOMSON FAMILY TRUST
900E - MATTHEW DENNIS SMITHWICK, AN UNMARRIED MAN
AND SAMUEL SETH SMITHWICK, AN UNMARRIED MAN

900F - 3SUNS PROPERTIES, LLC
900H - JAMES ALEXANDER GAINES & WIFE LORI ANN GAINES
900I - CHRISTOPHER L. COUDREIT & WIFE LEIGH M. COUDREIT
900J - STACY YOUNT DAVIS
900K - COOK FARM AND PROPERTIES LLC
900L - JAMES J. NUNALEE SR
900M - STEVEN G. GRIFFEN
900N - MARTIN PETHERBRIDGE & WIFE DONNA PETHERBRIDGE
900O - 3BS, L.L.C.
900P - SARAH KATHERINE DAVIS & ALEXANDER MORGAN DAVIS
900Q - SPRAY PAINT LLC
900R - JAMES KENT HARDIN
900S - BRENDA H. TOWLES
900T - DONNA I. HILL
900U - DEANE DIPAULO & WIFE CATHY DIPAULO

FOR ROW, SEE SHEET RW-6

FOR -L2- PROFILE, SEE SHEET NO. 9

Preliminary Plans - Subject to Change Without Notice

* APPROXIMATELY 2 PARKING SPACES
IMPACTED ON THIS PARCEL** SUPERELEVATION MEETS LOW SPEED
URBAN DESIGN CRITERIAHB-0040
6NORTH CAROLINA
DEPARTMENT OF TRANSPORTATION
NEW HANOVER COUNTYROADWAY DESIGN UNIT
ROADWAY DESIGN
ENGINEERHYDRAULICS
ENGINEERDOCUMENT NOT CONSIDERED FINAL
UNLESS ALL REVISIONS COMPLETED

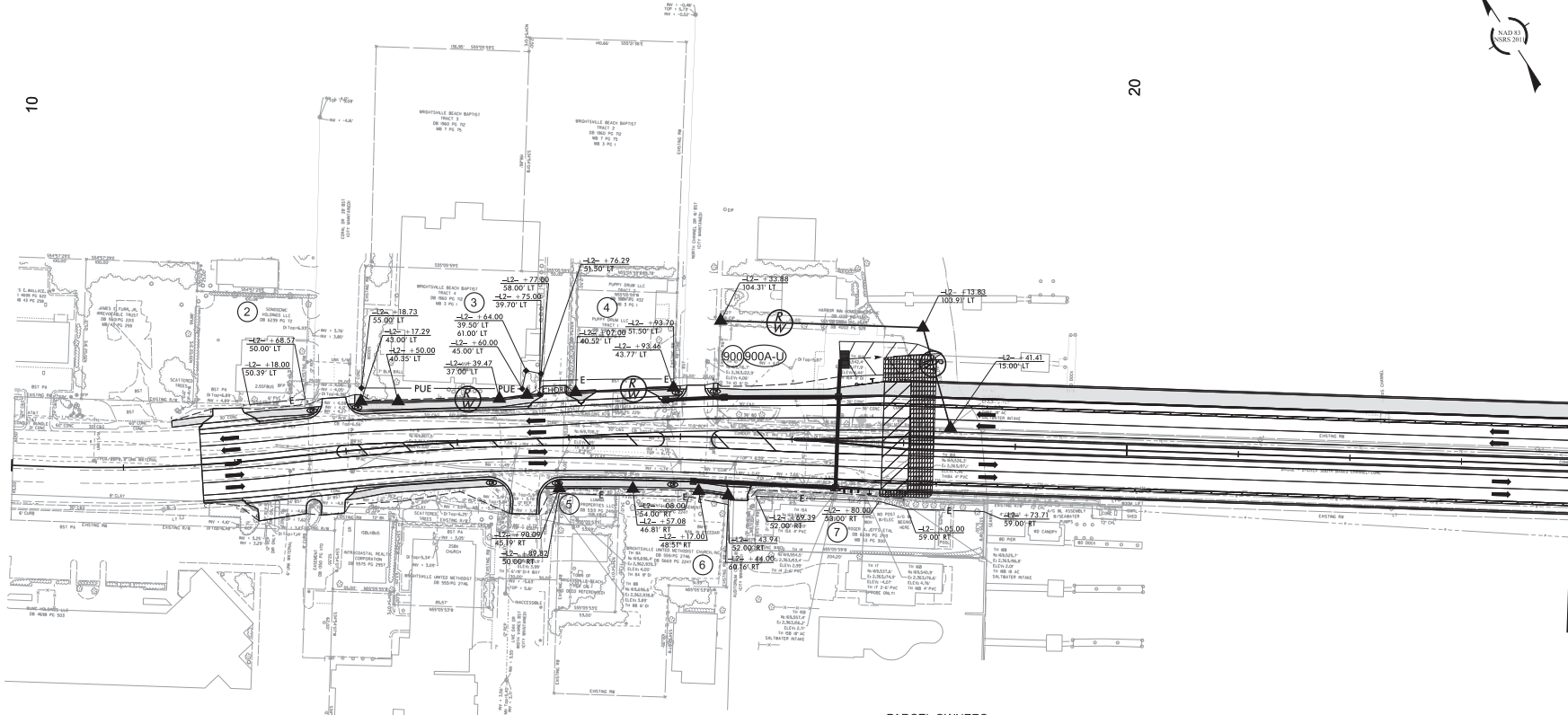
PREPARED BY

RS&HEST. 1958
1111 HARRISON AVENUE, SUITE 200
NEW HANOVER COUNTY, NC 28540

REVISIONS

10

20

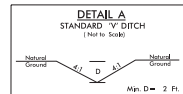


MATCH LINE -L2- STA 24+00.00 SEE SHEET RW-7

PARCEL OWNERS

- 2 - SONOGENIC HOLDINGS LLC
- 3 - WRIGHTSVILLE BEACH BAPTIST
- 4 - PUPPY DRUM LLC
- 5 - LUMINA PROPERTIES LLC
- 6 - WRIGHTSVILLE UNITED METHODIST CHURCH, INC
- 7 - ROGER A. JEFFS ETAL
- 900 - HARBOR INN HOMEOWNERS INC
- 900A - DUSTIN BRAUDWAY & BONNIE BRAUDWAY, A MARRIED COUPLE
- 900B - BILLY ROYAL
- 900C - RONALD GREG MASON, UNMARRIED & JULIE E. HANCOCK, UNMARRIED
- 900D - THE THOMSON FAMILY TRUST
- 900E - MATTHEW DENNIS SMITHWICK, AN UNMARRIED MAN AND SAMUEL SETH SMITHWICK, AN UNMARRIED MAN

- 900F - 3SUNS PROPERTIES, LLC
- 900H - JAMES ALEXANDER GAINES & WIFE LORI ANN GAINES
- 900I - CHRISTOPHER L. COUDREIT & WIFE LEIGH M. COUDREIT
- 900J - STACY YOUNT DAVIS
- 900K - COOK FARM AND PROPERTIES LLC
- 900L - JAMES J. NUNALEE SR
- 900M - STEVEN G. GRIFFEN
- 900N - MARTIN PETHERBRIDGE & WIFE DONNA PETHERBRIDGE
- 900O - 3BS, L.L.C.
- 900P - SARAH KATHERINE DAVIS & ALEXANDER MORGAN DAVIS
- 900Q - SPRAY PAINT LLC
- 900R - JAMES KENT HARDIN
- 900S - BRENDA H. TOWLES
- 900T - DONNA I. HILL
- 900U - DEANE DIPAULO & WIFE CATHY DIPAULO



FROM -L2- STA. 17+40 TO STA. 18+31 T

Preliminary Plans - Subject to Change Without Notice

FOR -L2- PLAN SHEET, SEE SHEET NO. 6

HB-0040
RW-6NORTH CAROLINA
DEPARTMENT OF TRANSPORTATION
NEW HANOVER COUNTYROADWAY DESIGN UNIT
ROADWAY DESIGN
ENGINEERHYDRAULICS
ENGINEERDOCUMENT NOT CONSIDERED FINAL
UNLESS ALL REVISIONS COMPLETED

PREPARED BY

RS&H
7701 E. HIGHWAY 40, SUITE 200
NEW HANOVER COUNTY, NC 28541

REVISIONS

901 - CHANNEL VIEW CONDOMINIUMS' HOMEOWNERS INC
901A - RYAN MARTIN GRAVEN
901B - JOHN C. MARTIN & WIFE JACKIE F. MARTIN
8A - LARRY N. BEARD, JR.
8B - ROBERT J. BARKER, JR., ET UX
9 - EASTERN SKATEBOARD SUPPLY, INC
10 - EASTERN SKATEBOARD SUPPLY, INC

	7
NORTH CAROLINA DEPARTMENT OF TRANSPORTATION NEW HANOVER COUNTY	

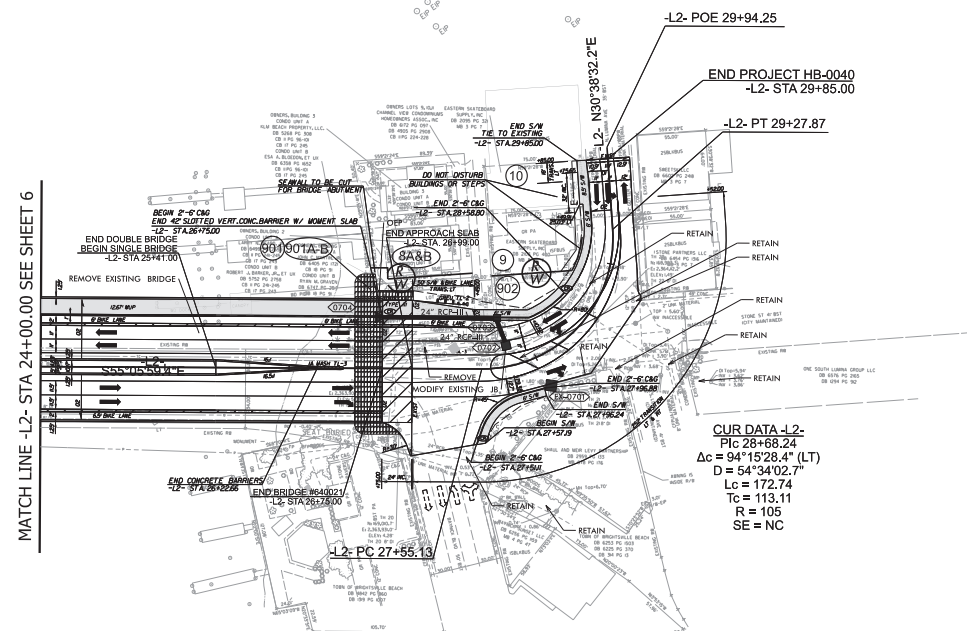
ROADWAY DESIGN UNIT
ROADWAY DESIGN
ENGINEERHYDRAULICS
ENGINEER

DOCUMENT NOT CONSIDERED FINAL
UNLESS ALL SIGNATURES COMPLETED

PREPARED BY

RS&H
8527 SIX FORKS ROAD, SUITE 400
FAIRFAX, NC 27033
MC FIRM LICENSE NO. P-0082

REVISIONS



FOR AUTOTURN MOVEMENTS, SEE SHEET 2B-1
FOR ROW, SEE SHEET RW-7
FOR -L2- PROFILE, SEE SHEET NO. 9

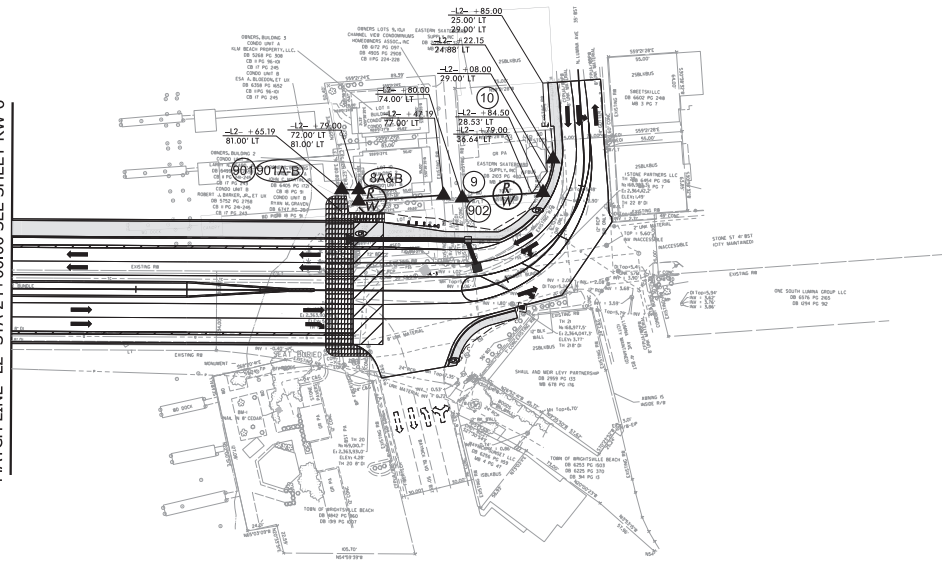
Preliminary Plans - Subject to Change Without Notice



PARCEL OWNERS

901 - CHANNEL VIEW CONDOMINIUMS' HOMEOWNERS INC
 901A - RYAN MARTIN GRAVEN
 901B - JOHN C. MARTIN & WIFE JACKIE F. MARTIN
 8A - LARRY N. BEARD, JR.
 8B - ROBERT J. BARKER, JR., ET UX
 9 - EASTERN SKATEBOARD SUPPLY, INC
 10 - EASTERN SKATEBOARD SUPPLY, INC

MATCH LINE -L2- STA 24+00.00 SEE SHEET RW-6



Preliminary Plans - Subject to Change Without Notice

FOR -L2- PLAN SHEET, SEE SHEET NO. 7

HB-0040

RW-7

NORTH CAROLINA
 DEPARTMENT OF TRANSPORTATION
 NEW HANOVER COUNTY



ROADWAY DESIGN UNIT
 ROADWAY DESIGN
 ENGINEER

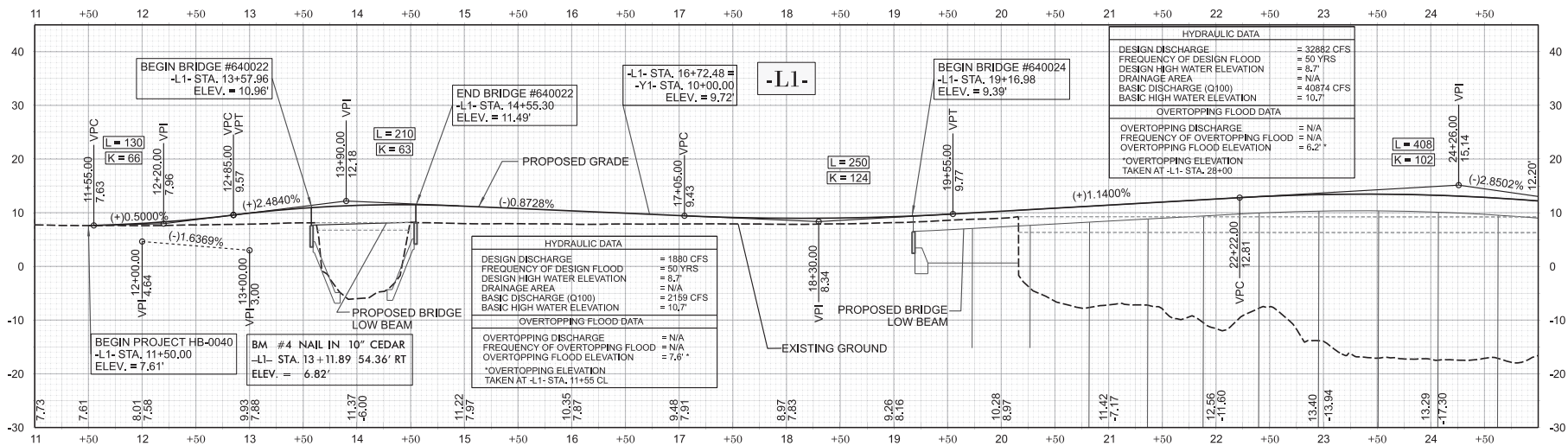
HYDRAULICS
ENGINEERDOCUMENT NOT CONSIDERED FINAL
UNLESS ALL REVISIONS COMPLETED

PREPARED BY

RS&H
 8111 LEE STREET, SUITE 200
 RALEIGH, NC 27615
 919.876.8800 FAX 919.876.8801

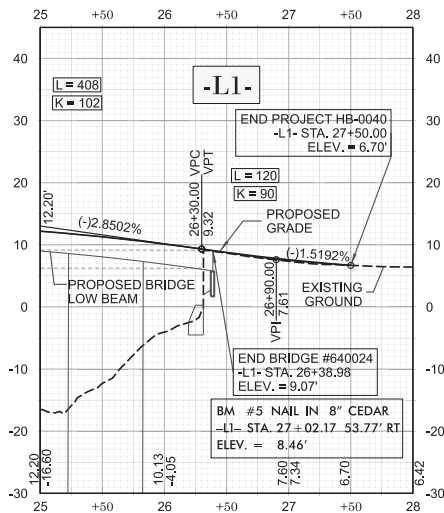
REVISIONS

11/14/23



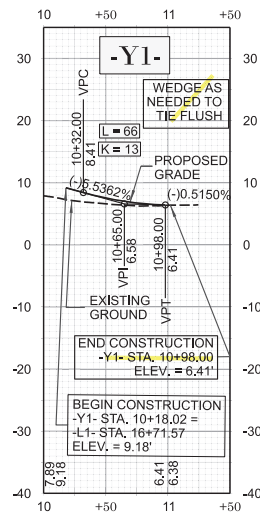
RIGHT DITCH -----

FOR -L1- ALIGNMENT, SEE SHEETS NO. 4&5



FOR -L1- ALIGNMENT, SEE SHEET NO. 5

FOR -Y1- ALIGNMENT, SEE SHEET NO. 4



Preliminary Plans - Subject to Change Without Notice

HB-0040

8

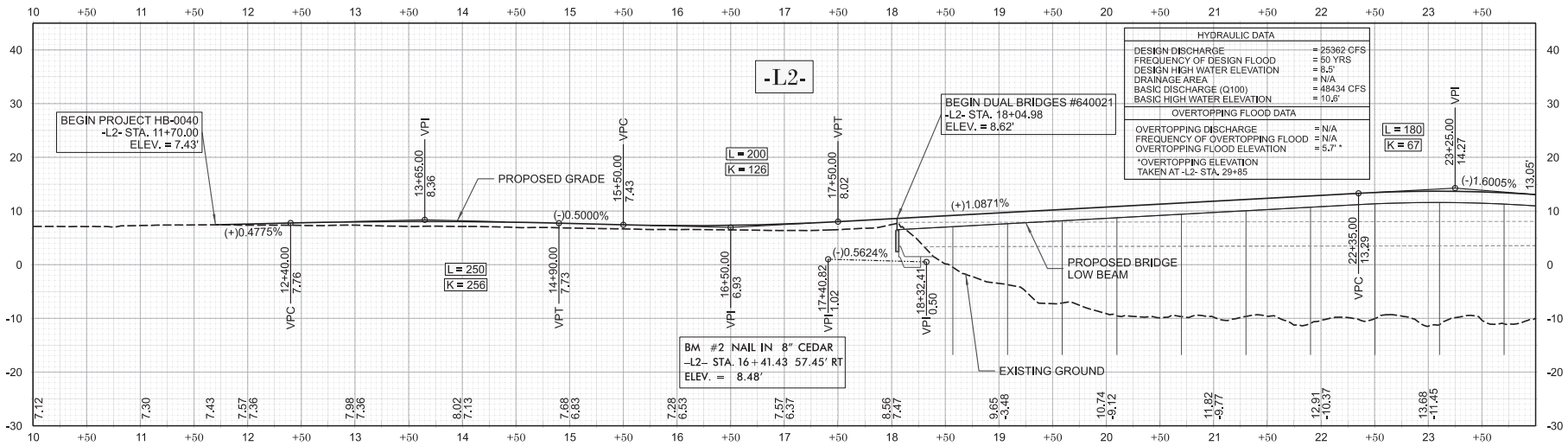
NORTH CAROLINA
DEPARTMENT OF TRANSPORTATION
NEW HANOVER COUNTYROADWAY DESIGN UNIT
ROADWAY DESIGN
ENGINEERHYDRAULICS
ENGINEERDOCUMENT NOT CONSIDERED FINAL
UNLESS ALL REVISIONS COMPLETED

PREPARED BY

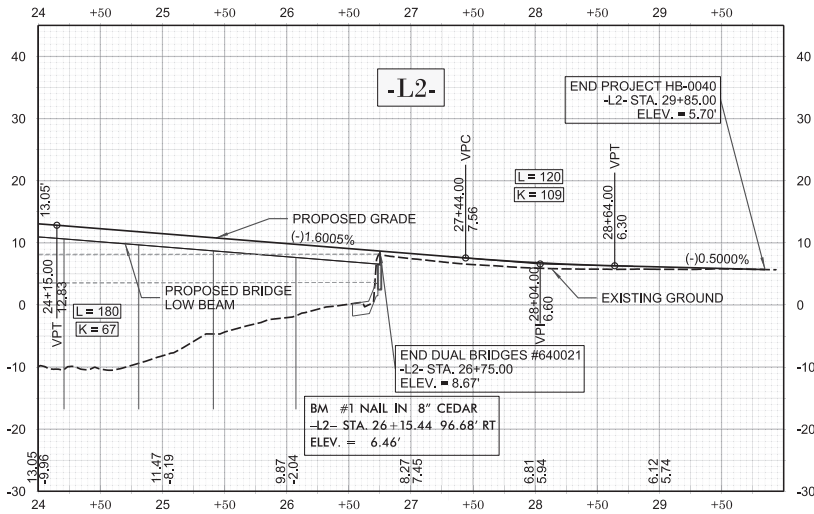
RS&H
1001 E. 10TH STREET, SUITE 200
RALEIGH, NC 27601
919.786.0000

REVISIONS

11/14/23



LEFT DITCH
FOR -L2- ALIGNMENT, SEE SHEET NO. 6



FOR -L2- ALIGNMENT, SEE SHEET NO. 7

HB-0040
9

NORTH CAROLINA
DEPARTMENT OF TRANSPORTATION
NEW HANOVER COUNTY



ROADWAY DESIGN UNIT
ROADWAY DESIGN
ENGINEER

HYDRAULICS
ENGINEER

DOCUMENT NOT CONSIDERED FINAL
UNLESS ALL REVISIONS COMPLETED

PREPARED BY

RS&H
1311 E. 10TH STREET, SUITE 100
RALEIGH, NC 27601
919.786.8800 FAX 919.786.8801

REVISIONS

Preliminary Plans - Subject to Change Without Notice